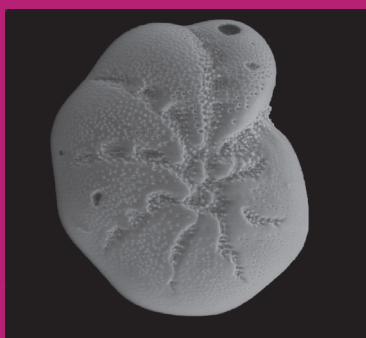


## **INTERNATIONAL MASTER**

### **Degree in Earth, Planetary Environmental Sciences**

### **Specialty PALEONTOLOGY - PALEOCLIMATOLOGY**



One Academic year, full-time part of the French University program, sponsored by the French Government.



The objective of the Master program is to train students in answering questions of interest to both **industry** (exploration of energy and mineral resources in sedimentary basins) and **academia** (Paleobiology, Climate change).

*Director of studies*  
*Prof. Taniel Danelian*  
taniel.danelian@univ-lille1.fr

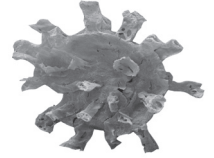
# International Master Degree in Earth, Planetary Environmental Sciences Specialty Paleontology - Paleoclimatology

## TRAINING OBJECTIVES

Special attention is paid in integrating fundamental and applied aspects of paleontology and geosciences

Students are trained to solve problems of stratigraphic correlations and paleoenvironmental reconstructions and in particular in the use of :

- (1) different analytical methods, useful in basin analysis,
- (2) paleontological, sedimentological and geochemical proxies,
- (3) quantitative analytical tools.



## CAREERS

This Msc program prepares students for a wide range of international careers in geosciences, within academia, industry, research, consulting, national and international government institutions and NGOs. Based on the research skills acquired students obtain a strong training for a successful integration in PhD program.

## TEACHING PROGRAM

A student needs to obtain 30 european credit points (ECTS) per semester. The first term contains a number of taught subjects. The 2<sup>nd</sup> term is dedicated to a research project.

### 1<sup>st</sup> term (September - December)

- Integrated Paleontology
- Sedimentology and Sequence Stratigraphy
- Micropaleontology
- Paleoclimatology – Geobiology
- Quantitative Paleontology
- Biogeochronology & Applied case studies



### 2<sup>nd</sup> term (January - June)

The research project may be prepared in Lille or in any of our partner Universities.

See : <http://sciences-de-la-terre.univ-lille1.fr/Formations/Master/PALEO/>



## ADMISSION REQUIREMENTS

A four-year undergraduate degree in the fields of Earth, Life and Environmental Sciences.

## TUITION FEES

Approximately 600 € including social security.

